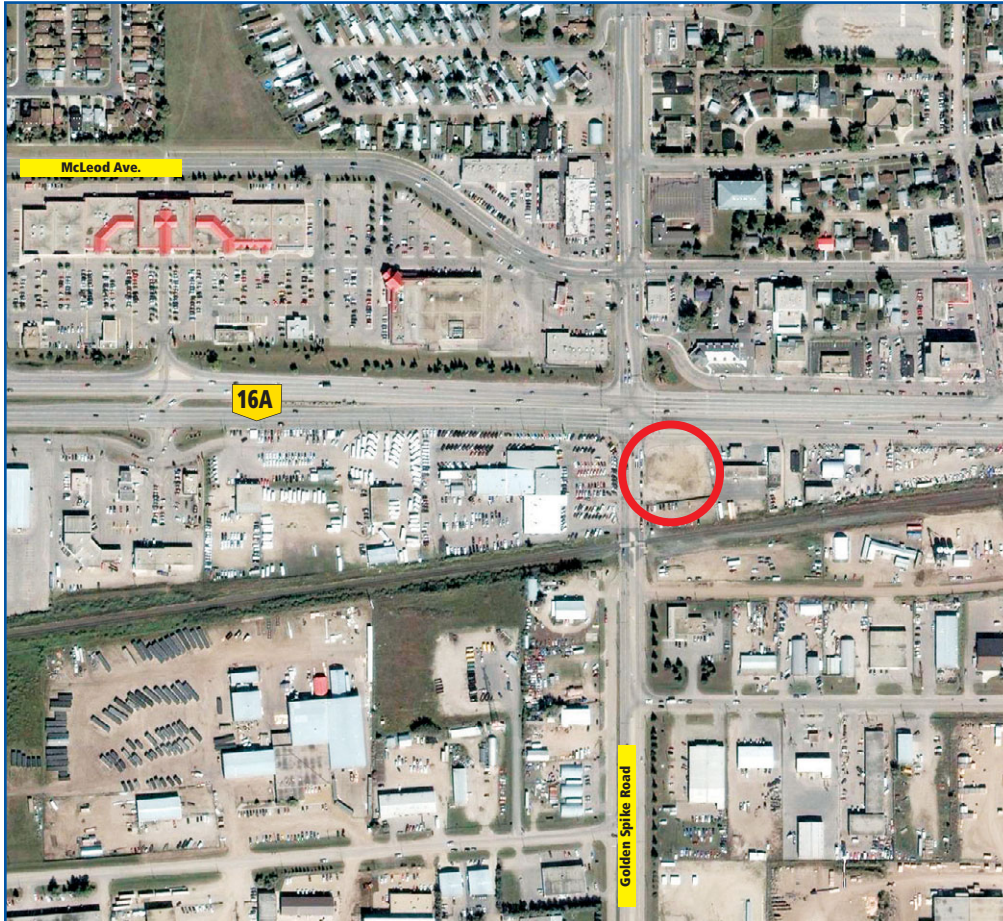


FOR SALE SPRUCE GROVE COMMERCIAL LAND

SE Corner Highway 16A and Golden Spike Road
Spruce Grove, Alberta



Property Information

Municipal Address:
SE Corner HWY 16A &
Golden Spike Road

Legal Description:
Plan: 609MC
Block: 1
Lot: 6

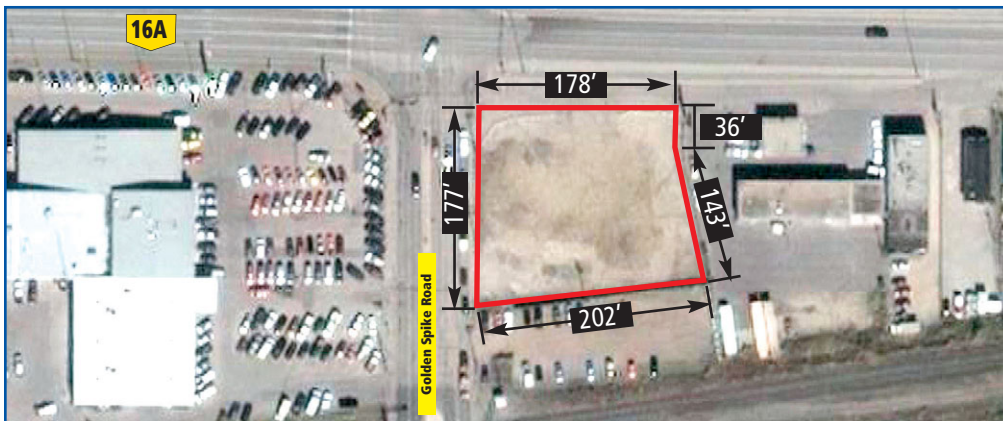
Lot Size:
178' X 177' (Irregular)
±33,200 sq. ft.

Zoning:
C 3 Vehicle Oriented Commercial

2009 Taxes:
\$5,828.32

Services: All
Environmental Report available

Price:
\$600,000



- HIGHLY VISIBLE
- HIGHWAY EXPOSURE
- GOOD ACCESSIBILITY
- SURROUNDING POPULATION 31,800 (STAT CANADA 2006)

The information contained herein has been gathered from sources deemed reliable, but is not warranted as such and does not form any part of any future contract. This offering may be altered or withdrawn at any time without notice.

For more information or to view, please contact:

Exclusive Agent

John Epp • jepp@barclaystreet.com

600, 10117 Jasper Avenue • Edmonton, AB T5J 1W8

ONCOR Barclay Street Real Estate Ltd. • www.barclaystreet.com • p: 780-409-8072 c:780-910-1418 f: 780-638-2056

