

1,083 sf

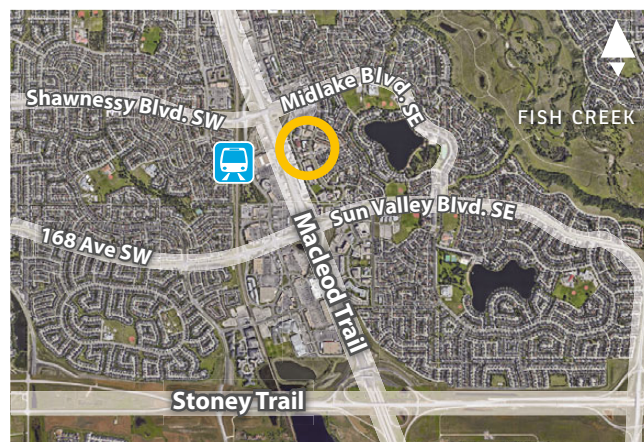
Suite 230



OFFICE SPACE FOR LEASE

Midpark Court
251 Midpark Boulevard SE, Calgary

» Easy access and egress to Macleod Trail and Stoney Trail.



FOR MORE
INFORMATION OR
TO VIEW, PLEASE
CONTACT:

Ian Robertson, ASSOCIATE

d: **587-393-9332**

c: **403-860-2383**

irobertson@barclaystreet.com



LOCAL EXPERTISE MATTERS

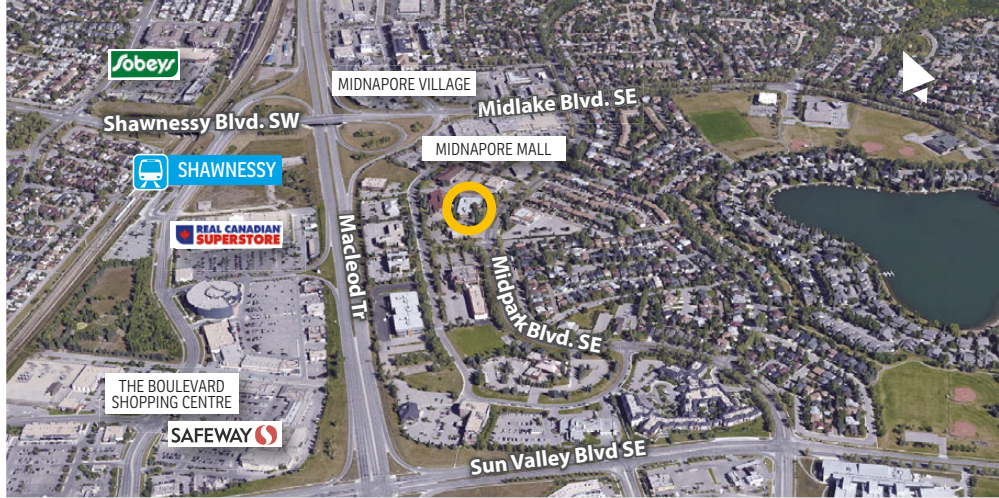


CELEBRATING

50 YEARS

1973-2023

- » Excellent Midpark office location directly east of Macleod Trail and south of Midnapore Mall.
- » Numerous amenities in the near vicinity including shops, cafes and restaurants
- » Easy access and egress to Macleod Trail and Stoney Trail.



LEASE INFORMATION

MUNICIPAL ADDRESS:

251 Midpark Boulevard SE, Calgary

AVAILABLE FOR LEASE:

» 1,083 sq. ft. – Suite 230

- Recently renovated.
- Coming soon: new LED lighting and new roller blinds.
- Available immediately.

PARKING:

1 stall per 447 sq. ft., \$55/stall per mo.
Additional off-site stalls available at no charge

OP. COSTS & TAXES:

Op. Costs: \$15.84

Taxes: \$1.03

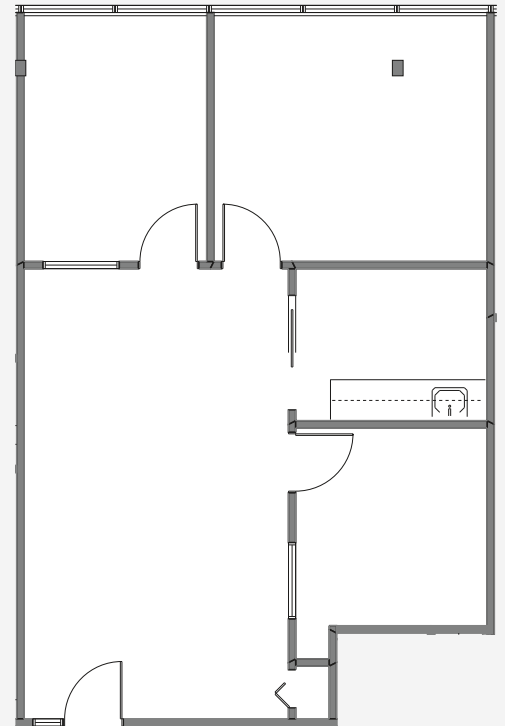
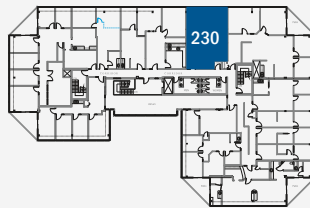
TOTAL: \$16.87 (est., 2024)

NET RENT: Market

SUITE 230

1,083 SQ.FT.

- Recently renovated.
- Coming soon: new LED lighting and new roller blinds.



The information contained herein has been gathered from sources deemed reliable, but is not warranted as such and does not form any part of any future contract. This offering may be altered or withdrawn at any time without notice.

Copyright © 2024 Barclay Street Real Estate Ltd. All rights reserved.

